

PRODUCT SPECIFICATION FOR INFORMATION

CUSTOMER

PRODUCT NAME : CAVITY DUPLEXER TYPE

PROJECT :

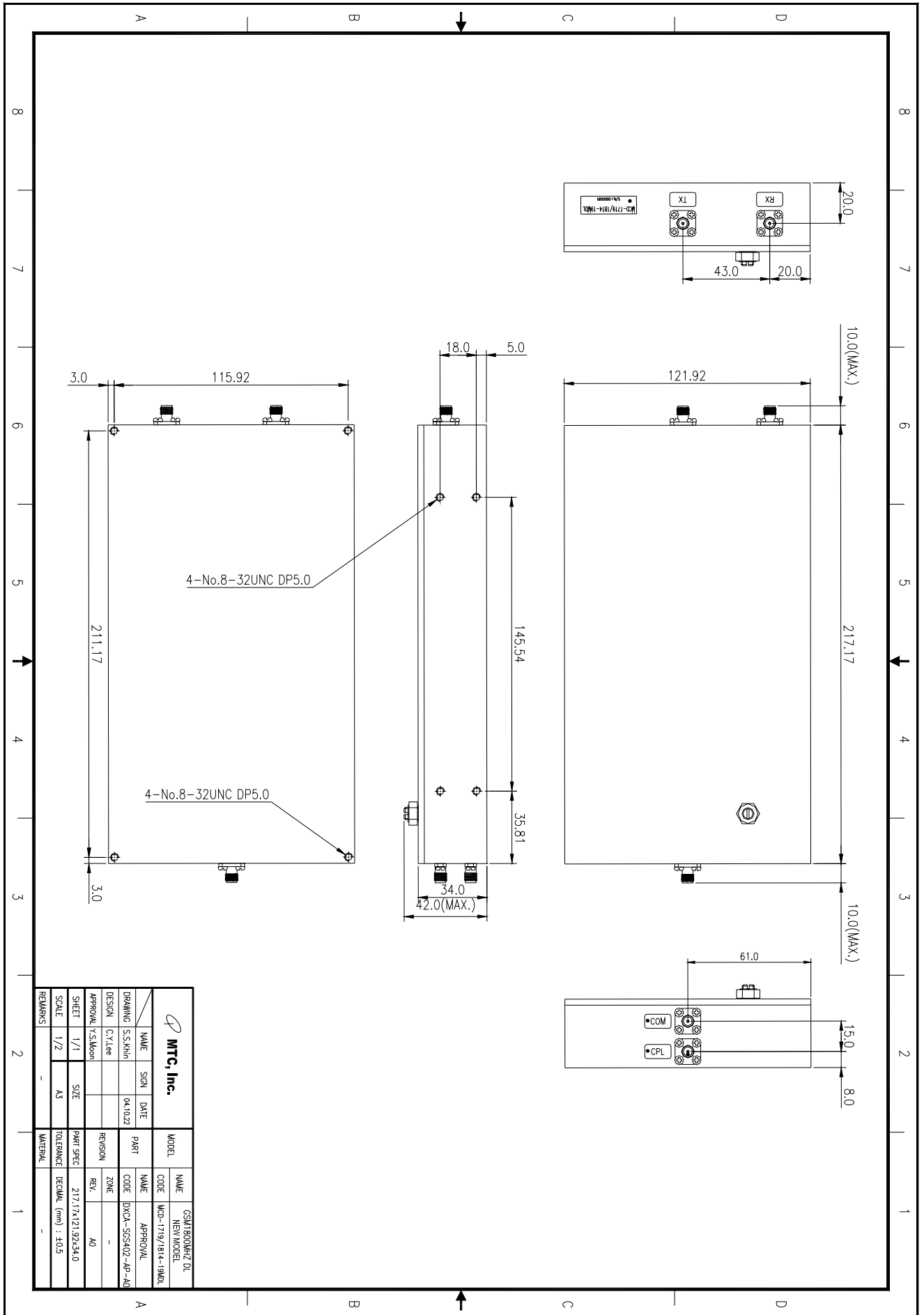
PART NO: MCD-1719/1814-19MDL

1. Electrical Specifications		
Parameter	Rx	Tx
Center Frequency	1719.5MHz	1814.5MHz
Frequency Range	1710MHz ~ 1729MHz	1805MHz ~ 1824MHz
Pass Band Insertion Loss	1.0dB(Max)	1.0dB(Max)
Pass Band Return Loss	18dB(Min)	18dB(Min)
Pass Band Ripple	0.5(Max)	0.5(Max)
Isolation Between Filters	100dB(Min)	100dB(Min)
Rejection	4.0dB \pm 0.5dB at 1730MHz 20dB(Min) at 1732MHz 100dB(Min) at 1805-1825MHz	4.0dB \pm 0.5dB at 1825MHz 20dB(Min) at 1827MHz 100dB(Min) at 1710-1730MHz
In/Out Impedance	50 Ω	
Monitor Port	-30dB \pm 1.0dB	
Input Power Range	150W CW	
2. Overall		
Antenna Port Connector	SMA-female	
Tx Port Connector	SMA-female	
Rx Port Connector	SMA-female	
Monitor Port Connector	SMA-Type Female (4HOLE)	
Relative Humidity	0 to 95%	
Operating Teperature Range	-20C to +70C	
Size	217.17 \times 121.92 \times 42 Max (WxDxH) unit: mm	

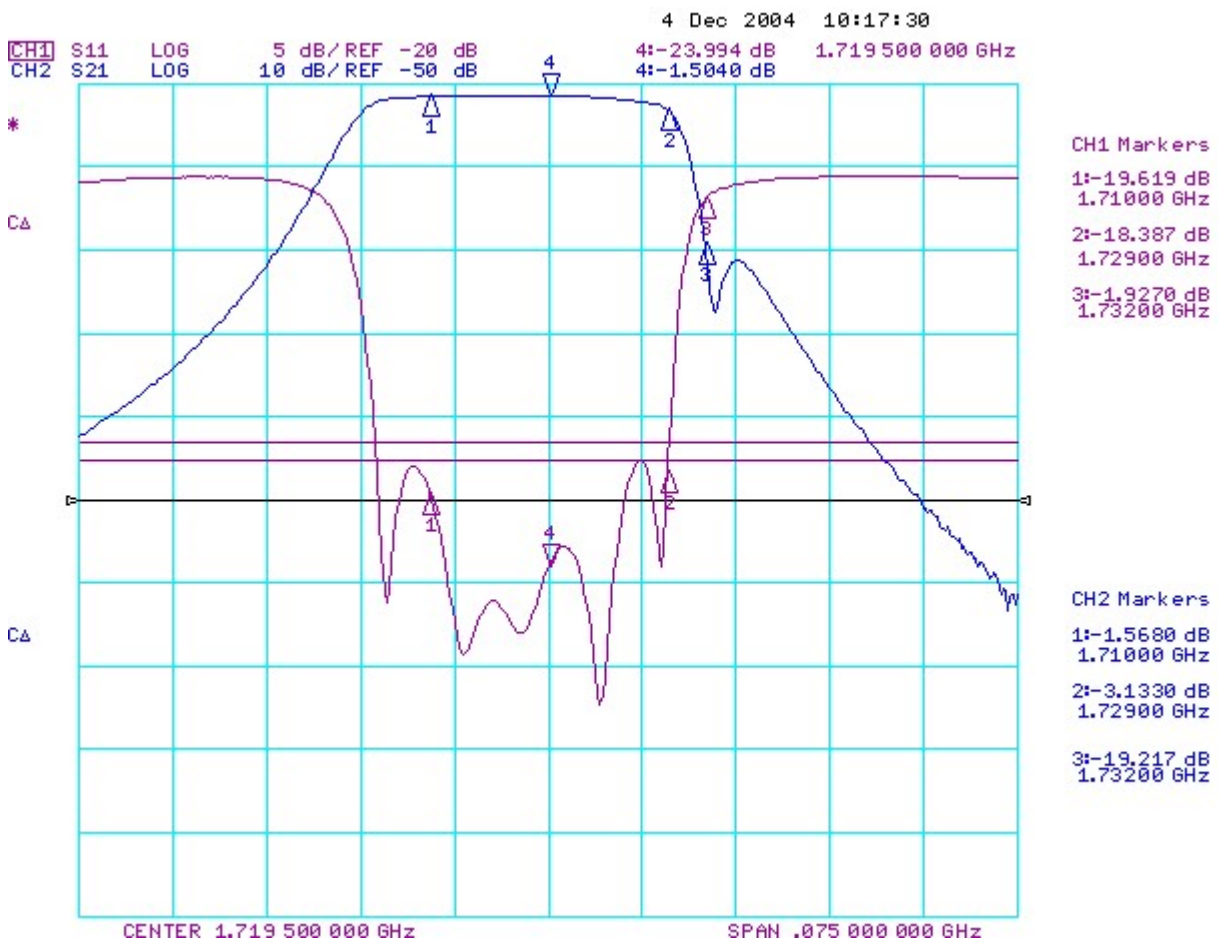
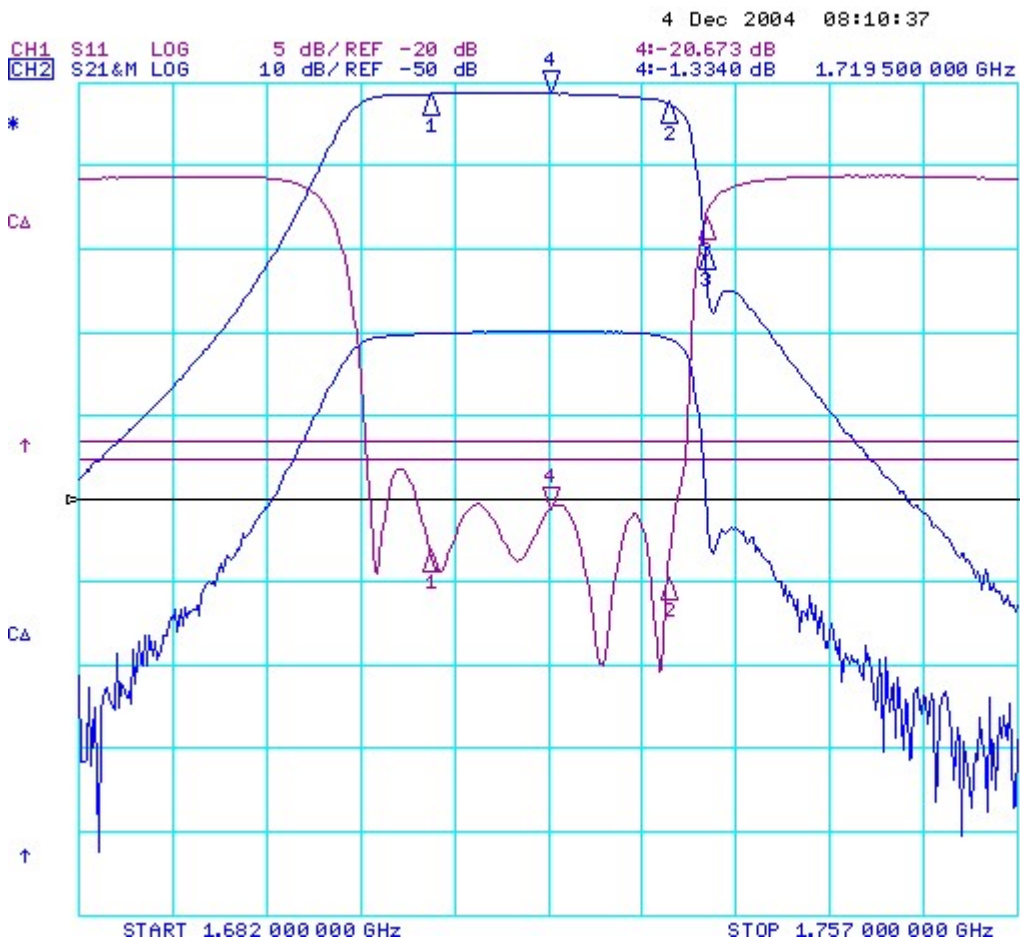
NOTE:

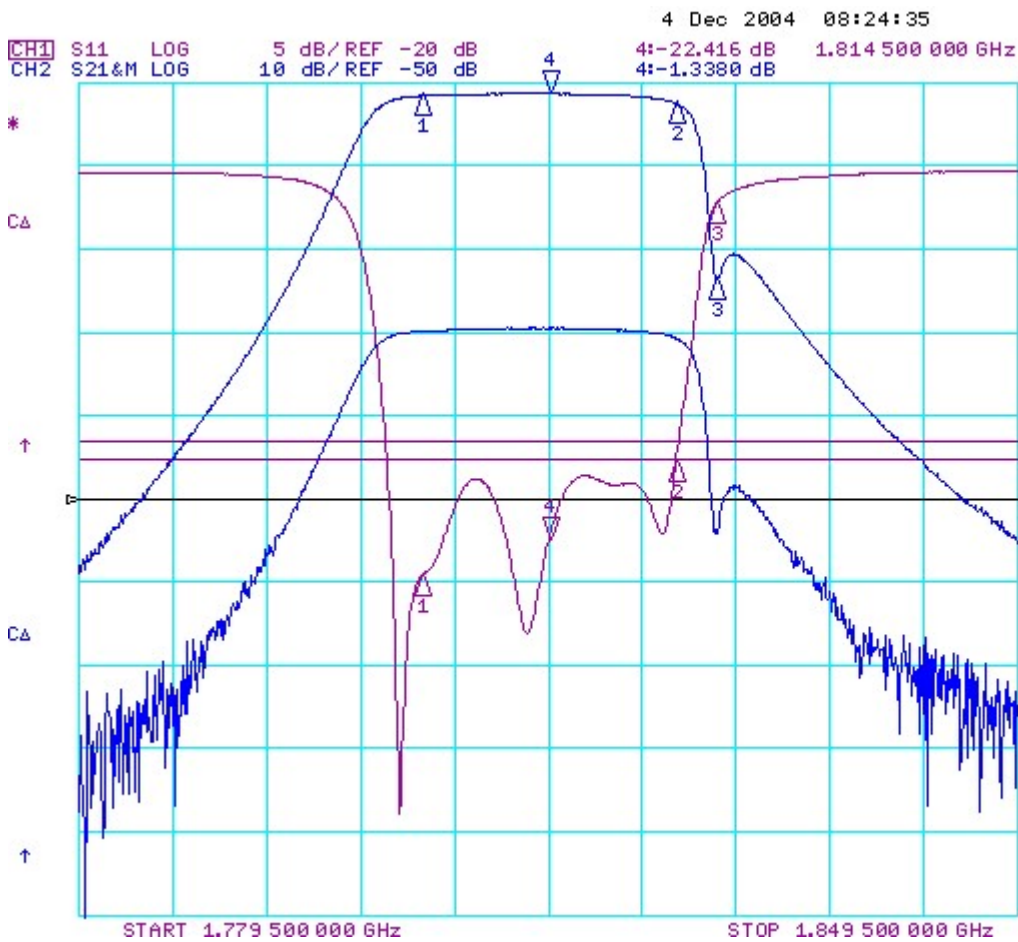
EQUIPMENT used : HP 8753E

Dimension : MCD-1719/1814-19MDL



MTC, Inc.		MODEL	NAME
NAME	SIGN	DATE	NEW MODEL
DRAWING	S.S.Khin	04.10.22	MCD-1719/1814-19MDL
DESIGN	C.Y.Lee		APPROVAL
APPROVAL	Y.S.Kwon	REVISION	ZONE
SHEET	1/1	SIZE	AD
SCALE	1/2	PART SPECI	217.17x121.92x34.0
REMARKS		TOLERANCE	DECIMAL : 10.5
		MATERIAL	





MTC, Inc.